



# IDP INSIGHT: DISABILITY

## 2019 OVERVIEW

### Background

This fact-sheet provides an overview of the disability among the IDP population in Syria (aged 12 and over). This report is based on data retrieved from HNAP's September-October 2019 IDP household survey, which interviewed 18,241 households for the out-of-camp population and 2,760 households for camp population – representative of the IDP population at the sub-district level - across all 14 Syrian governorates. Unless otherwise specified, all figures represent out-of-camp IDP figures.

This fact-sheet is released with the support of Humanity and Inclusion,

who provided technical support within disability. With their support, this study utilized the Washington Group Methodology on disability reporting, which, for data disaggregation purposes only, considers a person to have a 'disability' when an individual reports a "lot of difficulty" or "not able to do at all" in one or more of the six functional domains, which are detailed in the box below. When the survey was administered, questions were answered either directly by the head of household, or when necessary, answered by the head of household on behalf of another household member.

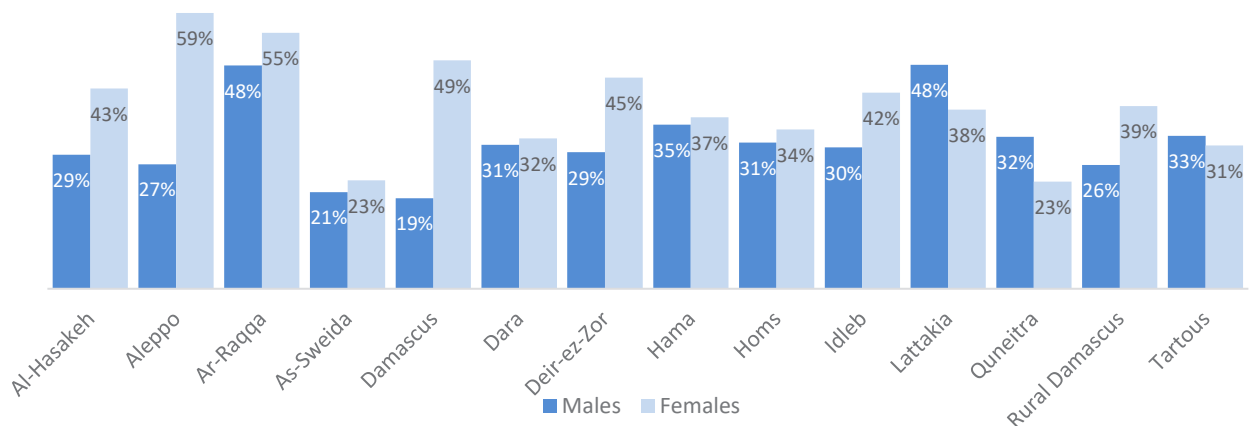
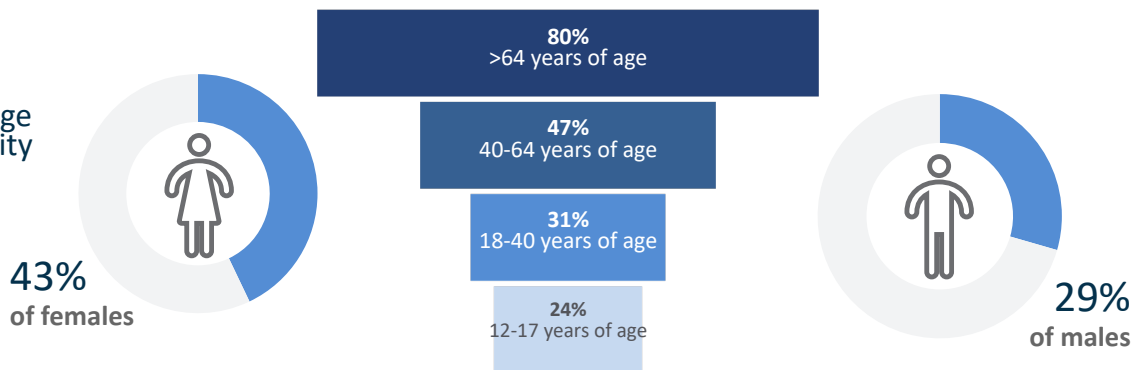
Disability is defined as reporting a lot of difficulty or cannot do at all in any of the below listed categories:

- Mobility**  
Difficulty walking or climbing stairs
- Vision**  
Difficulties seeing, even with glasses
- Self-Care**  
Difficulties with things like washing all over or dressing
- Hearing**  
Difficulties hearing, even with hearing aid
- Cognition**  
Difficulties remembering or concentrating
- Communication**  
Difficulties communicating, i.e. understanding or being understood, in usual language







### Rates and Type of Reported Disability

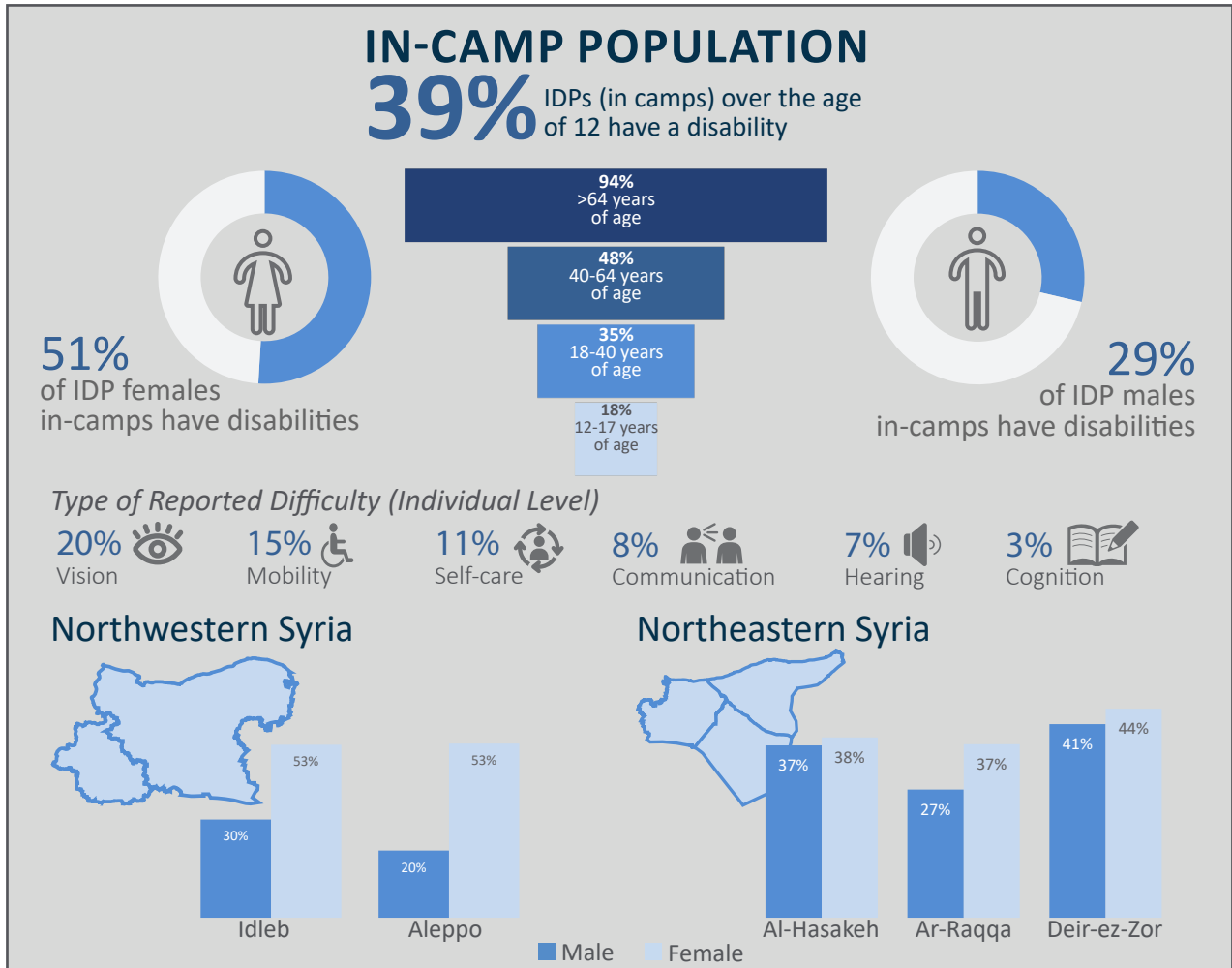
# 37%

of IDPs above the age of 12 have a disability



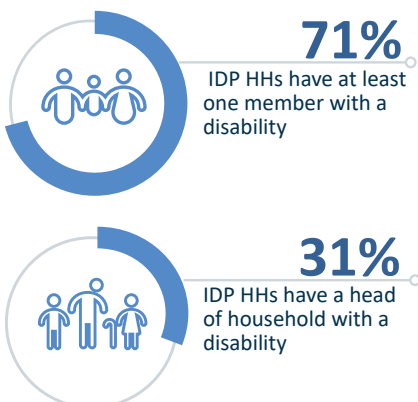
## Type of Reported Difficulty (Individual Level)

	 Mobility	 Vision	 Self-Care	 Hearing	 Cognition	 Communication
<b>Male</b>	14%	11%	11%	6%	3%	14%
<b>Female</b>	17%	17%	13%	9%	5%	17%
<b>Total</b>	16%	14%	12%	7%	4%	8%

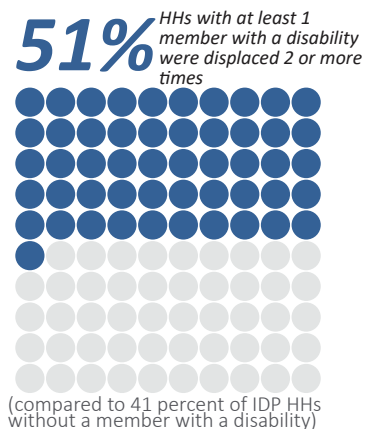


## Demographics

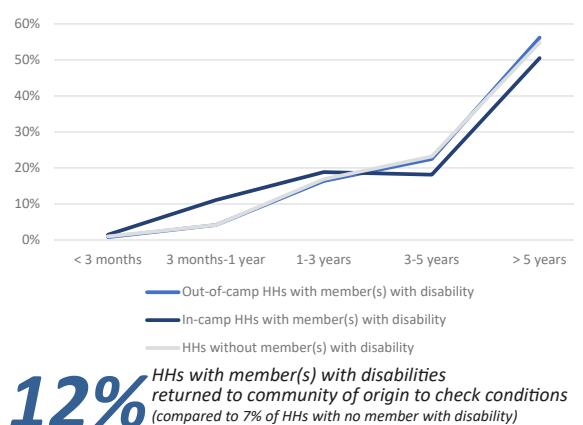
### Household Demographics



### Number of Displacements

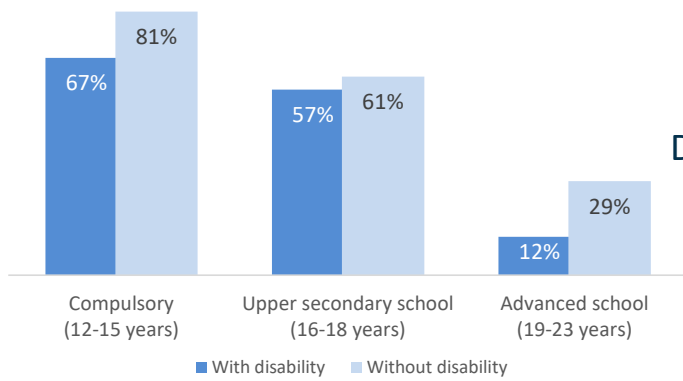


### Length of Displacement

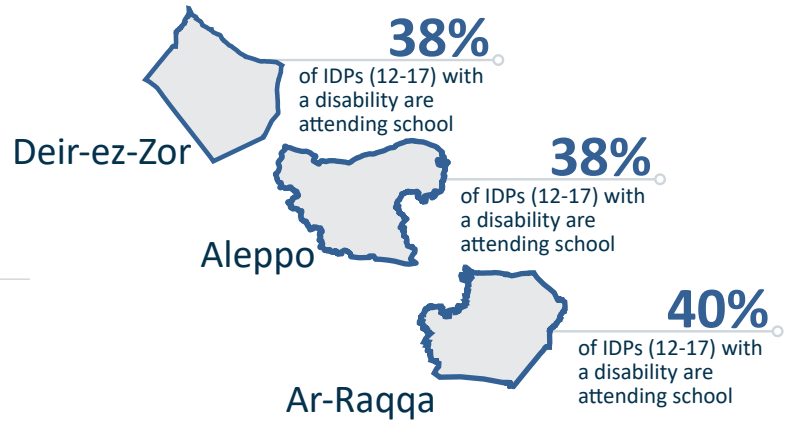


# Education

## Education Rates by Age

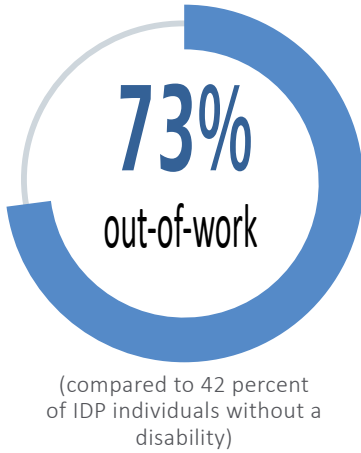


## Most Impacted Governorates

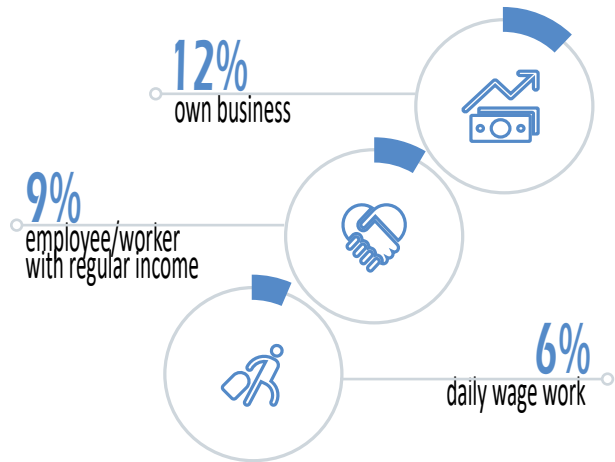


# Employment

## Out-of-Work Rate for IDPs with Disabilities

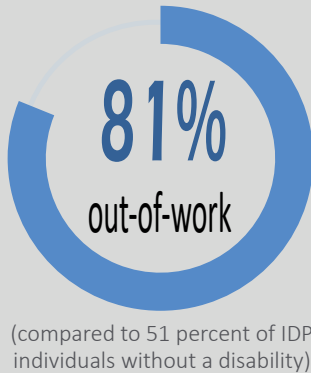


## Forms of Employment for IDPs with Disabilities



# IN-CAMP POPULATION

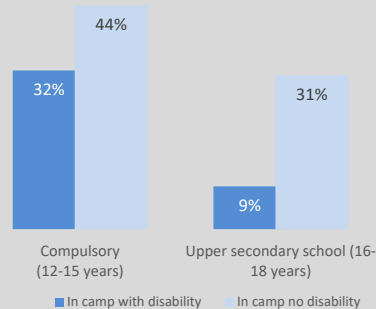
## Out-of-Work Rate for IDPs with Disabilities



**35,829 SYP**

Average Monthly Income of HHs with member(s) with a disability

## Education Rates by Age



## Northwestern Syria

**27%** of IDPs (12-17) with a disability are attending school

## Northeastern Syria

**51%** of IDPs (12-17) with a disability are attending school

## Income

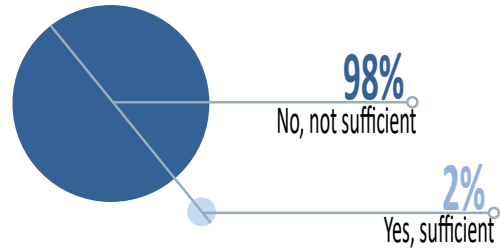
Average Monthly Income from all sources in HHs with Member(s) with Disabilities\*



90,459 SYP

(Compared to HHs without a member with disabilities: 84,086 SYP)

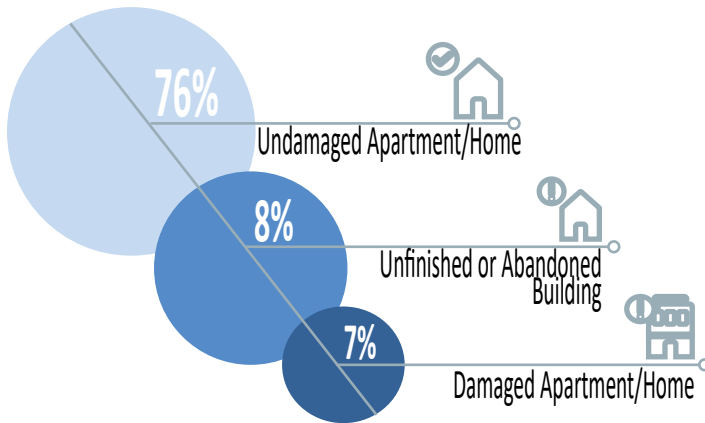
Is income sufficient to meet HH requirements? (HH with member(s) with disabilities)



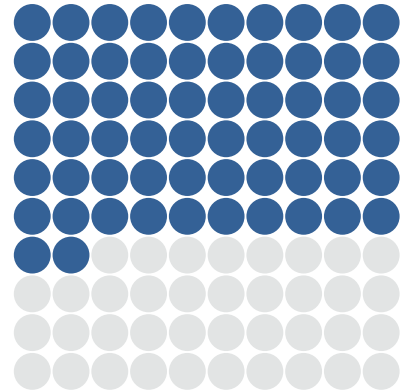
\*Please note that this figure takes into account **income from all sources**; therefore, higher than average income rates of HHs with member(s) with disabilities might be explained by higher rates of remittances (see next page- under 'assistance received' section). Furthermore, this figure does not consider potential increased cost burdens

## Shelter

Top 3 Shelter Type of HHs with Member(s) with Disabilities



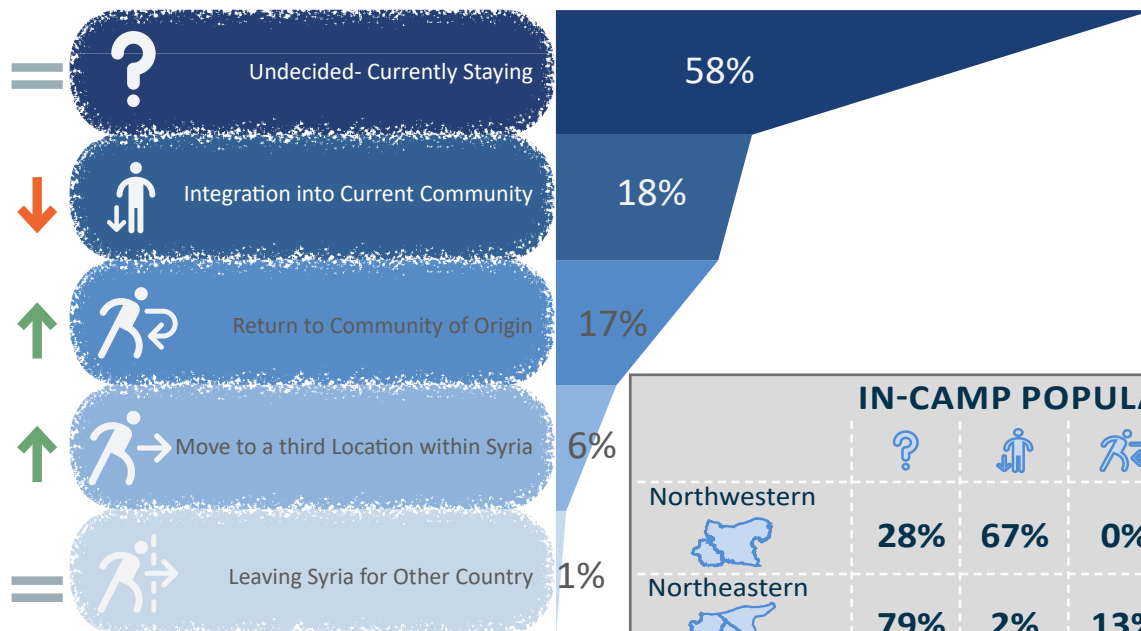
62% of HHs with at least 1 member with a disability rent their current shelter



## Future Intentions

Future Intention of HHs with Member(s) with Disabilities

(Arrows signify increase or decrease compared to HHs without member(s) with disabilities)



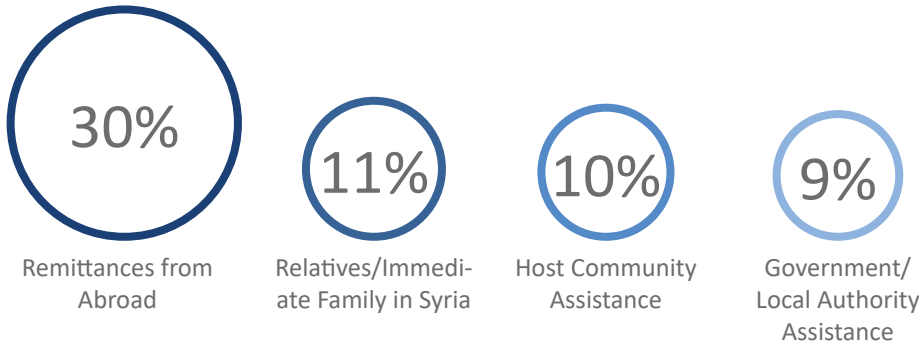
### IN-CAMP POPULATION

	?	↓	↻	→	↗
Northwestern	28%	67%	0%	4%	1%
Northeastern	79%	2%	13%	5%	1%



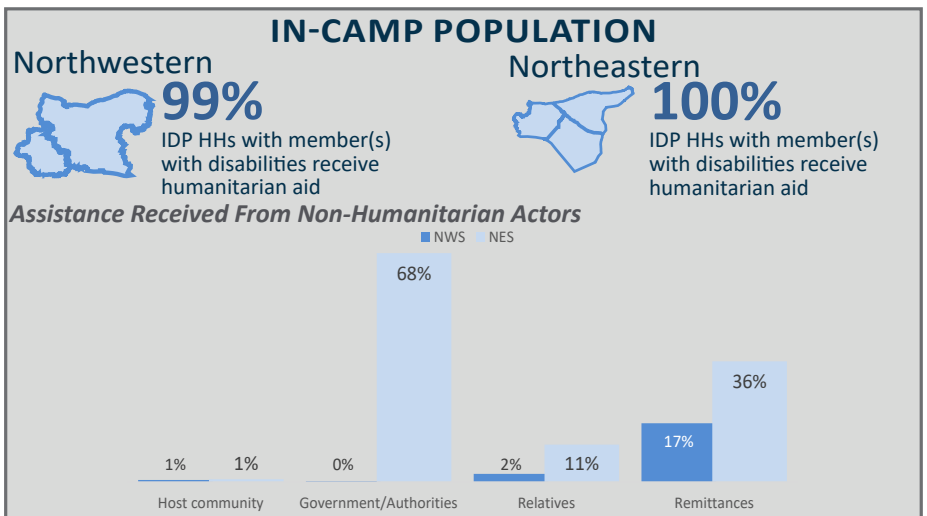
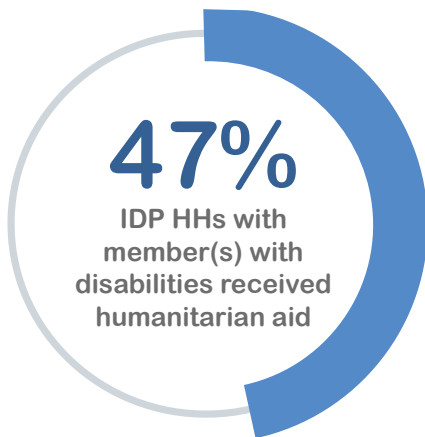
# Assistance Received

## Assistance Received from Non-Humanitarian Actors by HHs with member(s) with disabilities



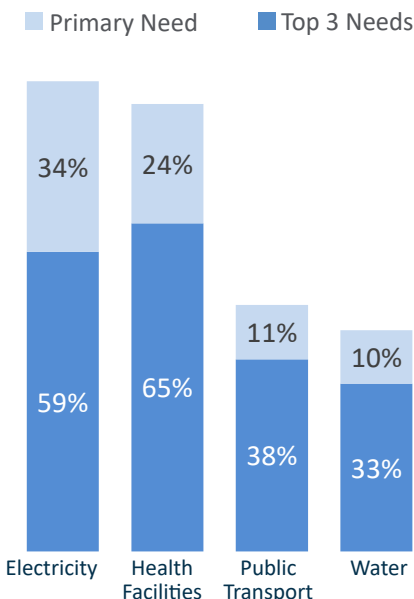
**IDP HHs with member(s) with disabilities report much higher rates of receiving remittances from abroad, as compared to IDP HHs without member(s) with disabilities (30 percent vs. 21 percent)**

## Assistance Received from Humanitarian Actors by HHs with Member(s) with Disabilities

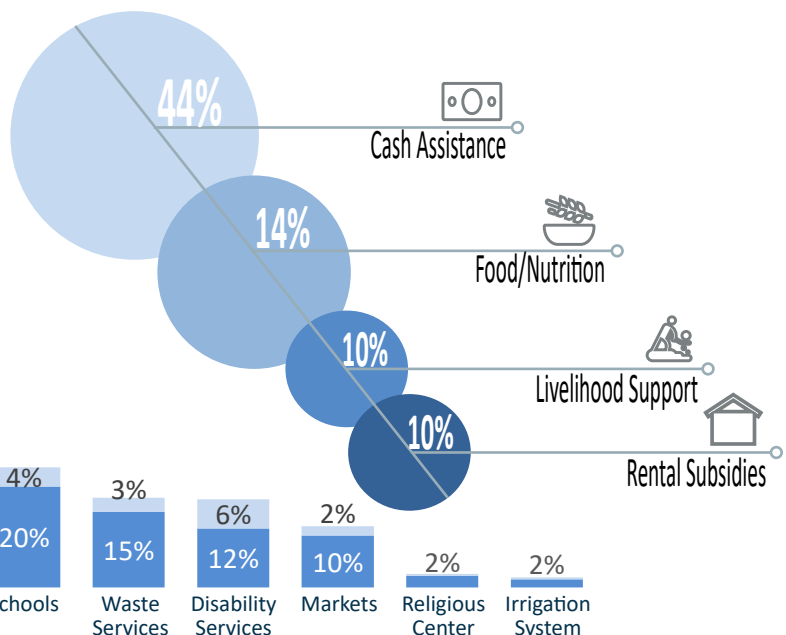


# Priority Needs

## Infrastructure Needs for HHs with Member(s) with Disabilities

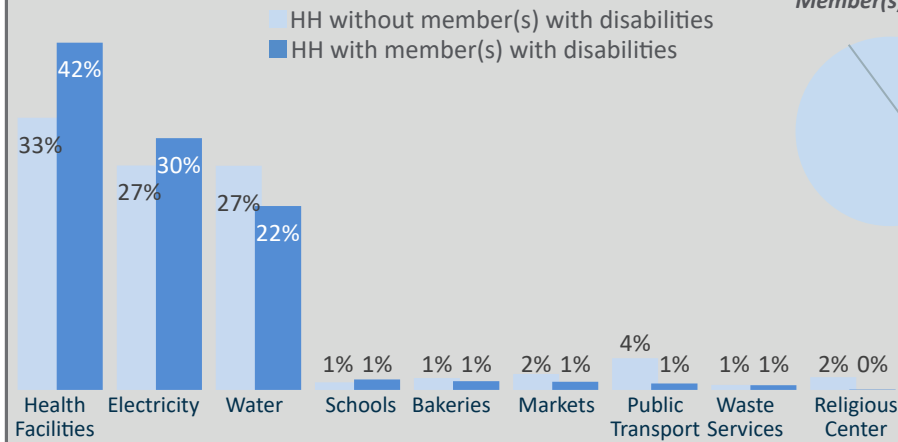


## Top 4 Priority Humanitarian Needs for HHs with Member(s) with Disabilities

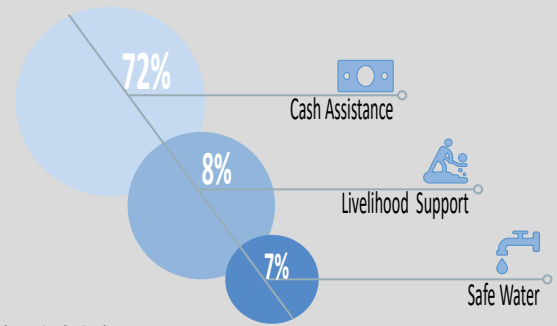


## IN-CAMP POPULATION

### Primary Infrastructure Needs

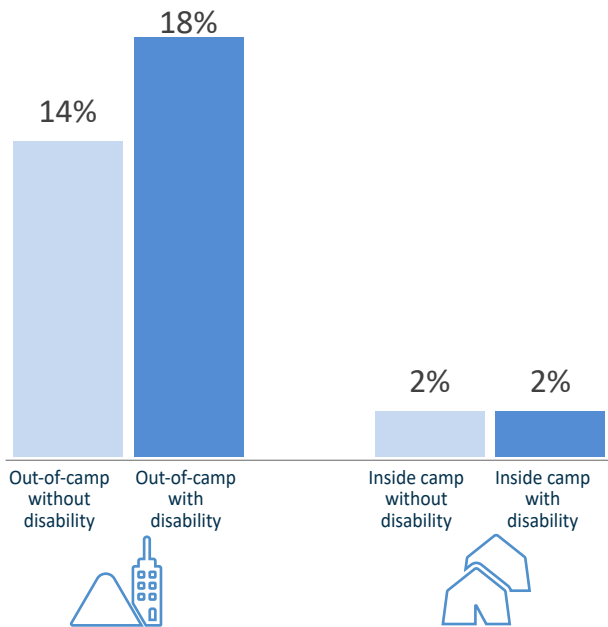


### Top 3 Priority Humanitarian Needs for HHs with Member(s) with Disabilities

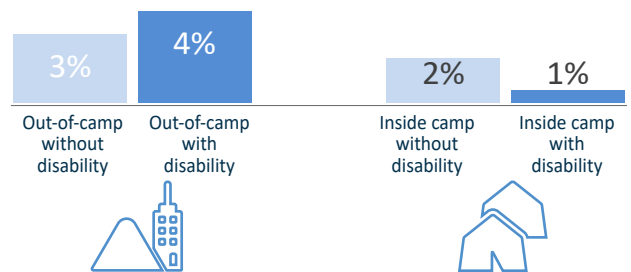


## Safety, Relationship with Community and Expectations

% of HHs who don't feel safe or don't feel safe at all



% of HHs who reported a bad or very bad relationship with their community



### HNAP

The Humanitarian Needs Assessment Programme (HNAP) for Syria is a joint UN assessment initiative which tracks displacement and return movements, conducts sector and multi-sectoral assessments, and monitors humanitarian needs inside Syria. HNAP is implemented through local Syrian NGOs, with technical support from UN Agencies.

### DISCLAIMER

The contents of this report are based on data collected by field staff using a questionnaire. HNAP endeavours to make sure that the information provided is accurate and up to date, but it is important to keep in mind that the reported findings and conclusions represent the views and opinions of the surveyed households, for which HNAP cannot be held responsible. Challenges to bear in mind include standard forms of survey bias, as well as data collection obstacles in a challenging environment.

### ACKNOWLEDGEMENTS

In order to respond to support the humanitarian community to respond to the needs of the mobile Syrian population, HNAP produces regular updates and thematic reports. None of which would be possible without the hard work of our implementing partners, who collect data - often in very difficult circumstances. Their efforts are deeply appreciated.

HNAP would also like to thank Humanity & Inclusion for continued technical support and guidance