



Humanitarian Needs Assessment Programme (HNAP) | Syria

IDP REPORT SERIES 2020

Disability Prevalence and Impact



SYRIAN

ARAB REPUBLIC

Methodology

In October 2020, HNAP conducted a nationwide socio-economic household survey across all 14 governorates in Syria, surveying IDP households. Fieldwork was carried out by experienced HNAP field teams who were trained on coded surveys by data collection experts. The survey collected data on key demographic and socio-economic indicators, which is representative at the country, governorate and sub-district level - also according to central and south Syria (CSS), north Syria (NS), north-west Syria (NWS) and north-east Syria (NES).¹

The sample frame was sourced from the list of (p-code) locations, updated by OCHA in August 2020, while the population figures were obtained from HNAP's Monthly Needs Monitoring population baseline, updated in September 2020. The sample was stratified at sub-district level, with a total sample size allocated unequally, targeting at most a 10 percent margin of error in each sub-district. The total sample size of 18,366 households, allocated to each sub-district, was distributed proportionally among its 2,561 locations. For the purposes of data analysis, a

combination of base weights as well as weights accounting for non-response or over-response were calculated.

The data in the report are weighted population estimates, i.e. they represent the reference population, not the sample population. Figures on absent members rely on the recall of the interviewed households, and as such may not include entire population who left Syria.

Note that to better inform humanitarian partners based on their regions of operation, HNAP refers to the following regions of Syria: central and south Syria (CSS), north Syria (NS), north-west Syria (NWS) and north-east Syria (NES). The boundaries, areas, and names shown and the designations used in this report do not imply official endorsement or acceptance. Reference is made to these designations as HNAP revised area of control frontlines to better account for the comparative similarity of conditions and access to services within the designated boundaries, as well as the sampling methodology employed during data collection.² A complete methodology is available upon request.

About This Report

Nearly half of Syria's pre-conflict population remains in displacement. 5.6 million are displaced abroad, the majority of whom are in neighboring Turkey, while a substantial 6.5 million are displaced across Syria.³ Over a third of those displaced inside Syria have a disability (36 percent). This report investigates the prevalence and impact of disabilities for displaced persons across the country. It achieves this through an investigation into socio-economic, demographic and priority needs indicators, as well as assessing the past and future intentions of IDPs with disabilities.

Since 2018 the Humanitarian Needs Assessment Programme (HNAP) has employed the Washington Group Questions (short-set tool), the most widely used and tested tool in humanitarian environments, to assess the prevalence of individuals with disabilities.⁴ Pivoting from traditional investigations on physical ailments, the assessment now

expands to define disability as an increased risk of exclusion based on reduced functioning in one or more core human functions. The functions are listed in the table below.

Despite the increase in data related to disability, all figures related to household assessments are subject to a standard margin of error. This is influenced in part by the inherent sampling, and interviewing, of distinct households within a given region as well as the multifaceted complexities related to the Syrian context. HNAP continuously seeks to improve and adapt to the situation on the ground, as well as the needs of our partners, to whom it provides current and relevant findings. In recognition of the implication of disability findings for humanitarian partners, HNAP remains available to support stakeholders in achieving appropriate and inclusive programming for all populations across Syria.

Disability is defined as reporting a lot of difficulty or cannot do at all in any of the below listed categories:

 Mobility Difficulty walking or climbing stairs	 Vision Difficulties seeing, even with glasses	 Self-Care Difficulties with things like washing all over or dressing	 Hearing Difficulties hearing, even with hearing aid	 Cognition Difficulties remembering or concentrating	 Communication Difficulties communicating, i.e. understanding or being understood, in usual language
---	--	---	--	---	--

¹ The geographical boundaries used do not imply official endorsement or acceptance by HNAP.

² List of locations were provided primarily by OCHA and supplemented with the CCCM and SSWG list of camps across the NWS and NES.

³ Figures based on UNHCR <https://data2.unhcr.org/en/situations/syria>; and HNAP's Monthly Mobility Needs Monitoring, October 2020.

⁴ Disability is defined through a spectrum of functional difficulties, according to [The Washington Group on Disability Statistics](#) and endorsed by [Humanity & Inclusion](#).

HNAP

The Humanitarian Needs Assessment Programme (HNAP) for Syria is a joint UN assessment initiative which tracks displacement and return movements, conducts multi-sectoral assessments, and monitors humanitarian needs inside Syria. HNAP is implemented through local Syrian NGOs, with technical support from UN Agencies.

ACKNOWLEDGEMENTS

In order to support the humanitarian community in responding to the needs of the mobile Syrian population, HNAP produces regular updates and thematic reports. None of this would be possible without the hard work of our implementing partners, who collect data - often in very difficult circumstances. Their efforts are deeply appreciated. HNAP would also like to thank Humanity & Inclusion for continued technical support and guidance.

DISCLAIMER

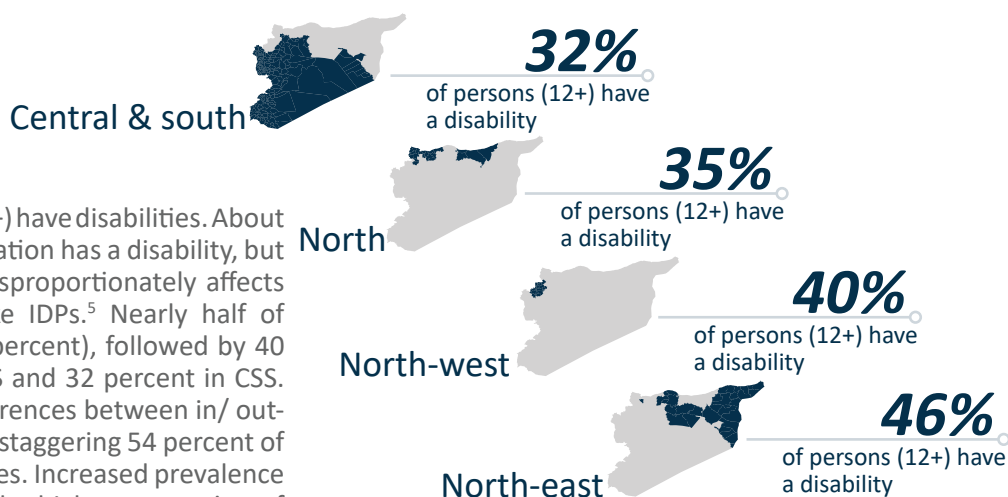
The contents of this report are based on data collected by field staff using a questionnaire. HNAP endeavours to ensure that the information provided is accurate and current, but it is important to keep in mind that the reported findings and conclusions represent the views and opinions of the surveyed households, for which HNAP cannot be held responsible. Challenges to bear in mind include standard forms of survey bias and data collection obstacles in a challenging environment.

Rates of Disabilities and Types of Difficulties

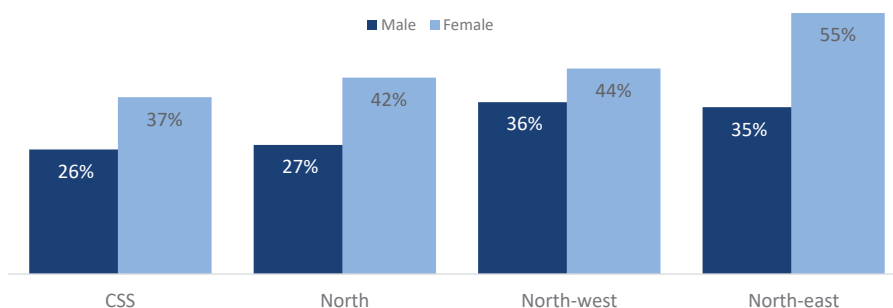
36%

of IDPs above the age of 12 have a disability

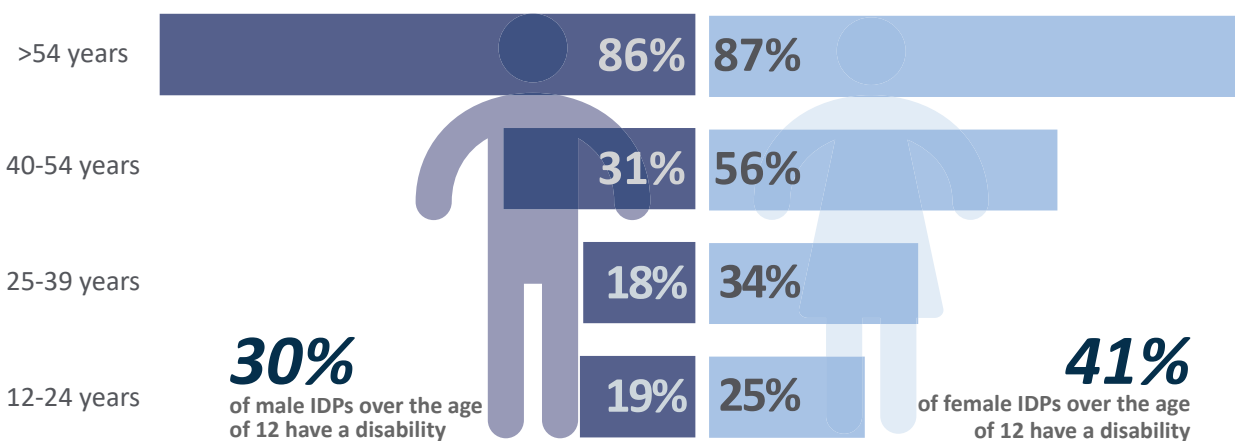
In Syria, over a third of IDPs (age 12+) have disabilities. About a quarter of the total Syrian population has a disability, but figures evidence that disability disproportionately affects more vulnerable populations, like IDPs.⁵ Nearly half of IDPs in NES have disabilities (46 percent), followed by 40 percent in NWS, 35 percent in NS and 32 percent in CSS. While there were only minor differences between in/ out-of-camp IDPs in north and NWS, a staggering 54 percent of in-camp IDPs in NES have disabilities. Increased prevalence in camps is likely attributable to the higher proportion of older and female populations, both of which are more likely to have disabilities.⁶



Prevalence of IDPs with disabilities, by sex and region (% of individuals)



% of IDPs with disabilities by age and sex (% of individuals 12+)



Type of reported difficulty (% of individuals 12+)

	Mobility	Vision	Self-Care	Communication	Hearing	Cognition
Females	18%	17%	14%	11%	11%	5%
Males	13%	12%	8%	7%	6%	2%
Total	16%	14%	11%	9%	8%	4%

⁵ Figures based on H NAP's Summer 2020 Disability Overview <http://hnap.info/fssportal/seeddms51x/seeddms-5.1.8/out/out.ViewDocument.php?documentid=477&showtree=1>

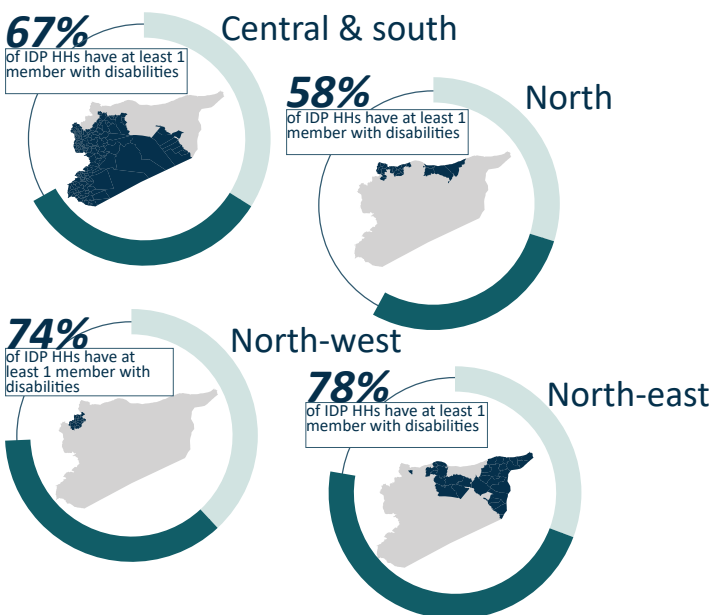
⁶ Figures on IDP demographics available in H NAP's 2020 IDP Report Series: Demographics <http://hnap.info/fssportal/seeddms51x/seeddms-5.1.8/out/out.ViewDocument.php?documentid=532&showtree=1>

Household Demographics

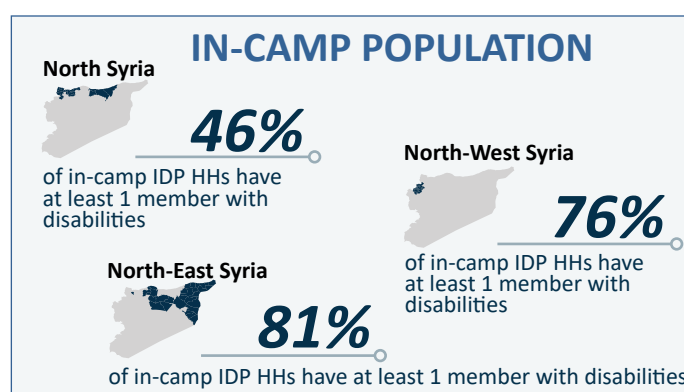


Regional prevalence of disability (% of IDP HHs)

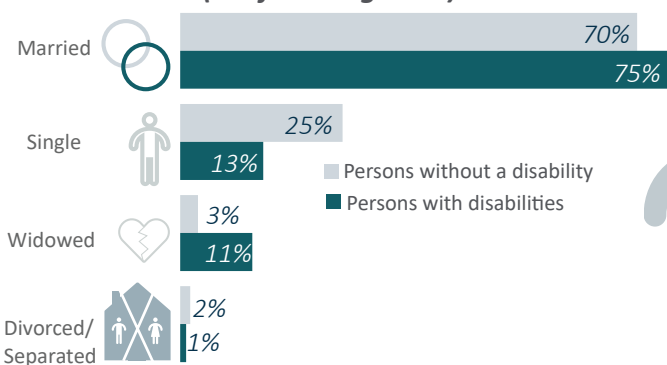
- HH with 1 member with a disability
- HH with >1 members with disabilities
- HH without member with disabilities



A significant proportion - 36 percent - of IDP HHs are headed by a member with disabilities, affecting HH ability to secure sufficient economic resources, disproportionately exposing over a third of displaced HHs to on-going socio-economic shocks associated with displacement. Indeed, only 14 percent of HHs with multiple members with disabilities report sufficient income. Findings therefore suggest that the over two-thirds of IDP HHs with members with disabilities will be disproportionately impacted by economic vulnerability.



Marital status (% of IDPs age 15+)



Females with a disability are 3 times more likely to be widowed than females without a disability. A total of 16 percent of females with a disability are widowed, compared to only 3 percent of men with a disability and 5 percent of females without a disability. Findings confirm the discriminatory effects of aging in conflict-affected areas, where older women are less likely to be cared for, especially if widowed, disproportionately exposing them to disabilities.

Reason for Last Displacement

Push factors are conditions or incidents which cause IDPs to flee their prior place of residence, while reasons for displacing to current location are categorized as pull factors. Security is slightly less likely to trigger displacement because HHs with members with disabilities are more vulnerable and hence are pushed to move to access better economic opportunities or improved shelter. Indeed, HHs with more than one member with disabilities are also less likely (34 percent) than those without members with disabilities (41 percent) to displace to current location due to improved security conditions. Findings not only highlight increased economic vulnerability of HHs with members with disabilities, but suggest they may face increased barriers to fleeing in times of crisis.

Primary push and pull factors for displacement (% IDP HHs with members with disabilities)

	HHs without members with disabilities	HHs with 1 member with disabilities	HHs with 1< members with disabilities	
Conflict / security situation	67%	68%	59%	Push factors
Deterioration of economic situation	18%	18%	22%	
Lack of basic services	3%	3%	4%	
Lack of shelter	6%	6%	7%	
Eviction	5%	4%	7%	
Discrimination by the community	1%	1%	1%	
Improved security situation	41%	38%	34%	Pull factors
Access to economic opportunities	16%	13%	17%	
Availability of shelter	11%	13%	15%	
Social/cultural reasons	11%	14%	14%	
Availability of basic services	8%	7%	6%	
Accessibility	6%	9%	8%	
Proximity to origin	4%	4%	4%	
Access to humanitarian assistance	3%	2%	2%	

Education

Education attendance rates (IDPs 12-23 years)⁷

50% of IDPs aged 12-23 with a disability are attending school, compared to **69%** of IDPs without a disability

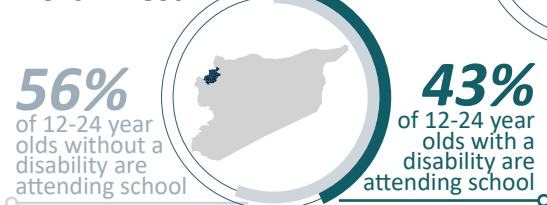
Central & south



North



North-west

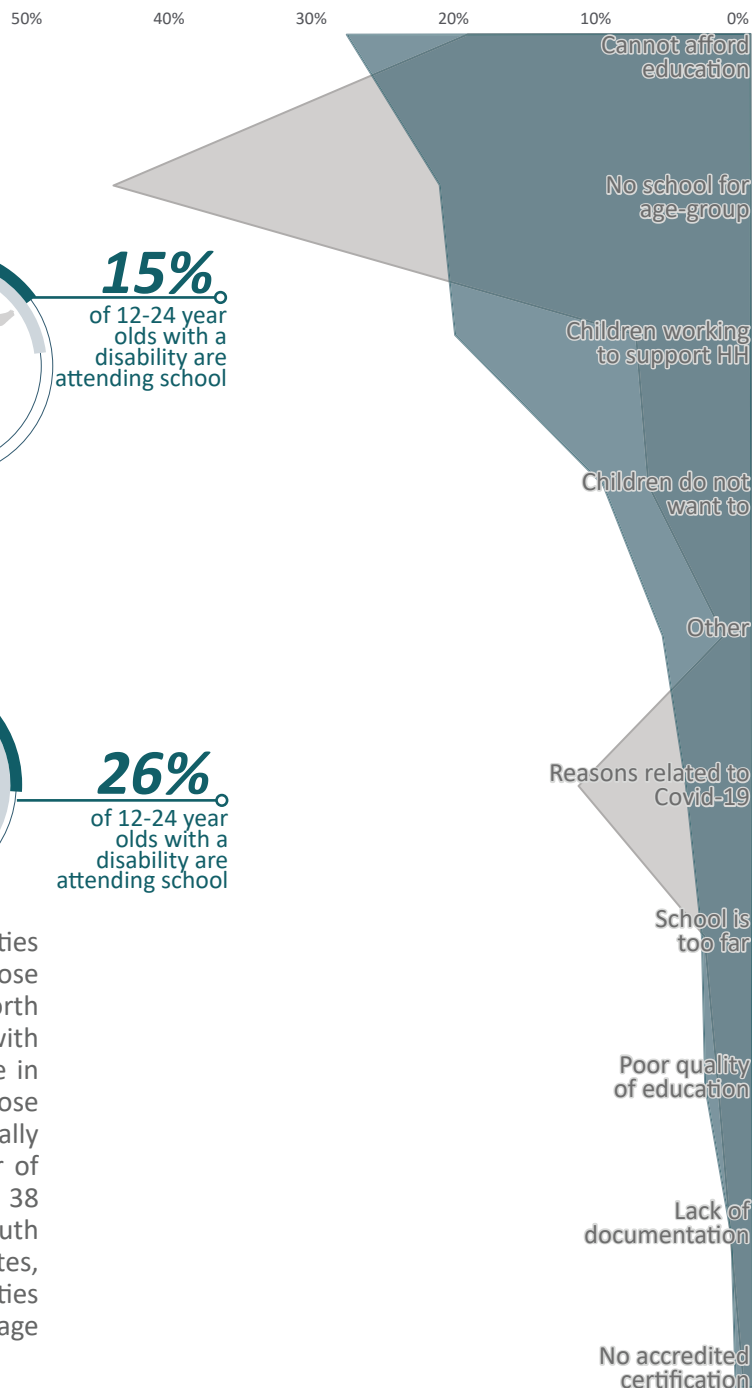


North-east



Reasons for not attending (% of IDP HHs with at least one member with disabilities and children out-of-education)

■ HHs with members with disabilities
■ HHs without members with disabilities



Only half of young IDPs (aged 12-23) with disabilities are attending school, compared to 69 percent of those without a disability. The situation is most dire in north Syria for both groups, but especially for children with disabilities where only 15 percent are reported to be in attendance, as compared to about a quarter of those without disabilities. The situation is only marginally improved in north-east Syria, where about a quarter of those with disabilities are in education, compared to 38 percent of those without disabilities. Central and south Syria maintains the highest rate of in-education rates, with other three-quarters of individuals with disabilities attending some form of school, this is only 10 percentage points less than pupils without disabilities.

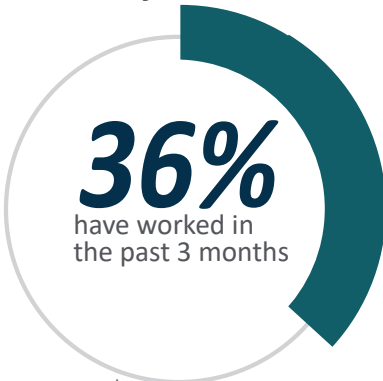
About a quarter of households with members with disabilities and children out-of-education attribute unaffordable fees as the main driver for not sending children to school (27 percent of all HHs with children out of school). Lack of affordability was the most prominent reason for HHs in NWS (29 percent). Limited attendance in NES and NS is predominately related to the availability or provision of education services, 29 percent of households with children with disabilities report this as the main reason for children not attending. Of critical concern is the quarter

of HHs in CSS (24 percent) attributing lack of attendance to children needing to work to support the household. Concerning rates of children in-work are also prominent in NWS (23 percent) and NES (20 percent) with a moderate difference in NS (10 percent). Findings evidence the critical cycle of economic insecurity and vulnerability affecting HHs with members with disabilities. Without economic investment, HHs with members with disabilities risk passing this deprivation on to future generations by limiting access to education subsequent employment opportunities.

⁷Attendance is defined as those "in-education" through face-to-face instruction, via remote modalities, or a combination of both, these figures exclude the nearly 20 percent of HHs who declined to respond to the education status of their children. Of note, 60 percent of IDPs aged 12-17 with disabilities are attending school, compared to 73 percent of those without disabilities nationally.

Employment

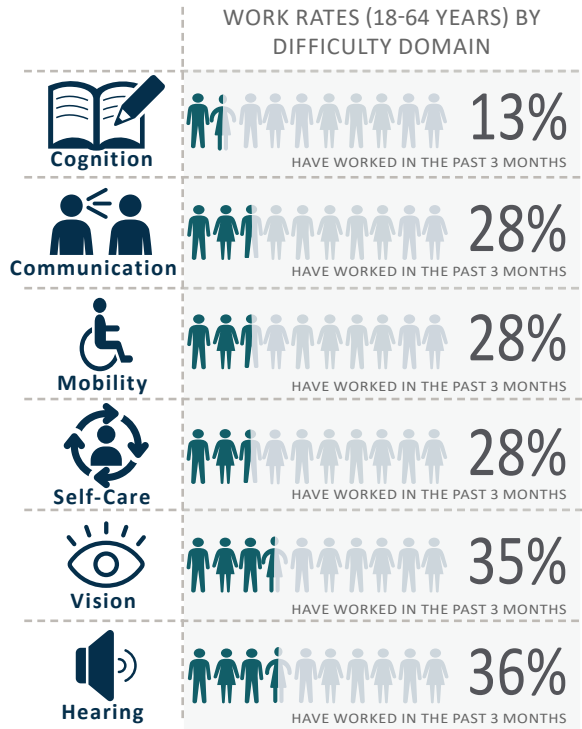
Work rate for IDPs with disabilities (18-64)



Compared to 55 percent of IDPs without a disability

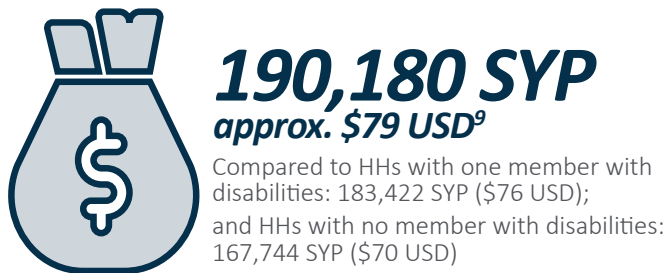
88 percent of working-aged IDP males without a disability have engaged in some form of paid work in the last 3 months, compared to only 20 percent of females. These figures grow increasingly stark for persons with disabilities, and significantly compounds the risks facing already vulnerable households. While 72 percent of males with disabilities are employed, only 15 percent of females with disabilities are employed- they are less than half as likely to achieve employment compared to females without a disability. 52 percent of working IDP males with disabilities own their own business, while females with disabilities are most likely to be employed with regular income (73 percent).

Forms of paid work (of those who have worked in the past 3 months) for IDPs with disabilities

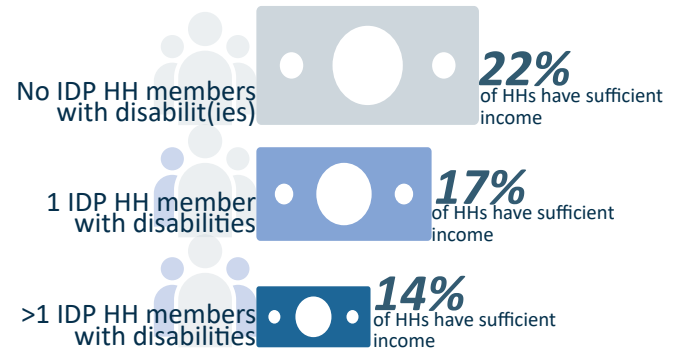


Income and Expenditures

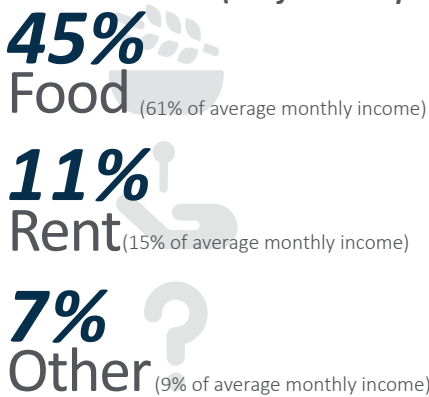
Average monthly income from all sources in IDP HHs with >1 members with disabilities⁸



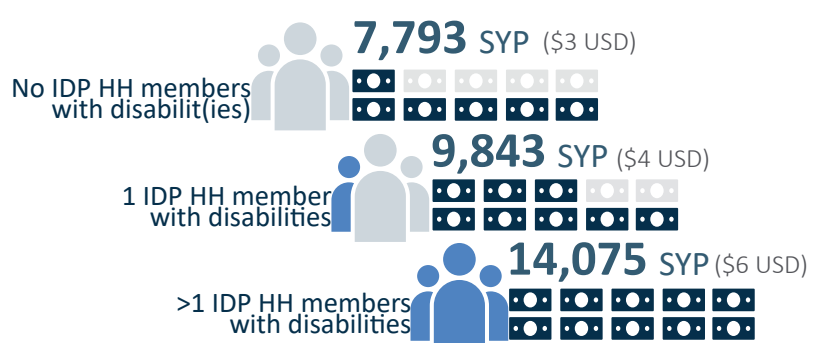
Income Sufficiency



Top 4 expenditures of IDP HHs with >1 members with disabilities (% of total expenditures)¹⁰



Average monthly health care/medical expenditures by presence of member(s) with disabilities (SYP)



IDP HHs with members with disabilities are more likely to report higher average monthly expenditure in all surveyed domains (especially hygiene items, NFIs, healthcare). In total, IDP HHs with more than one members with disabilities spend 25 percent more than their average income, with a total expenditure of 254,693 SYP (106 USD), compared to HHs without members with disabilities who spend 19 percent more than their average income- 207,053 SYP (86 USD). In particular, IDP HHs with more than one members with disabilities engage in increased debt/lending payments: 14,695 SYP (6 USD), versus 8,702 SYP (3 USD) spent by IDP HHs without members with disabilities.

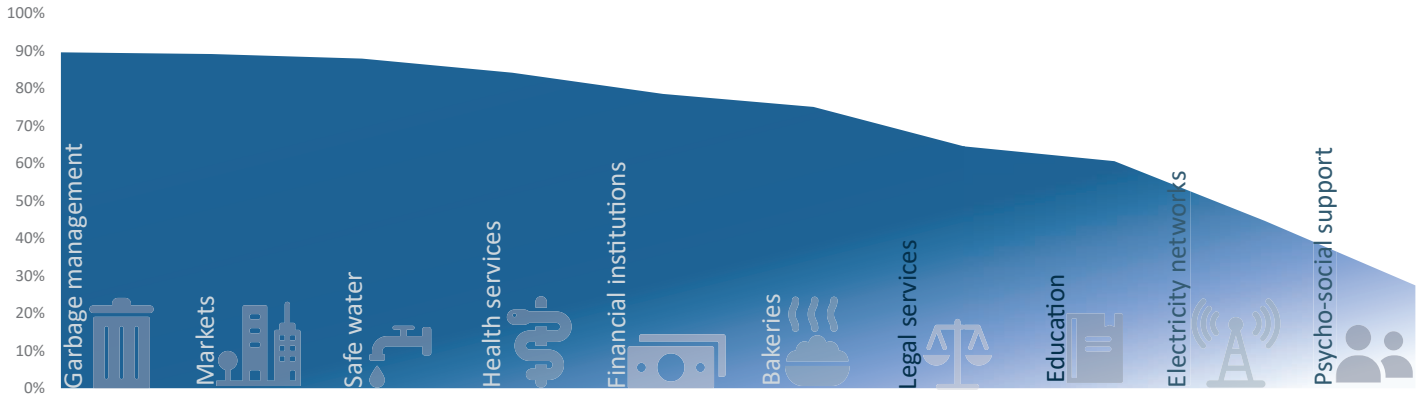
⁸ Despite fluctuations in the SYP value, HINAP determined the exchange rate of 2,400 SYP: 1 USD the best estimate. The figure is based on daily exchange monitoring and a trimmed mean methodology to establish a more "conservative value". Please note, figures are an estimate, are not verified through external sources and should not be extrapolated beyond October.

⁹ Please note that this figure takes into account **income from all sources**

¹⁰ Amount based on the average monthly reported expenditure based on the last three months prior to data collection.

Access to Services

Access to services for HHs with members with disabilities (% of IDP HHs reporting sufficient access)

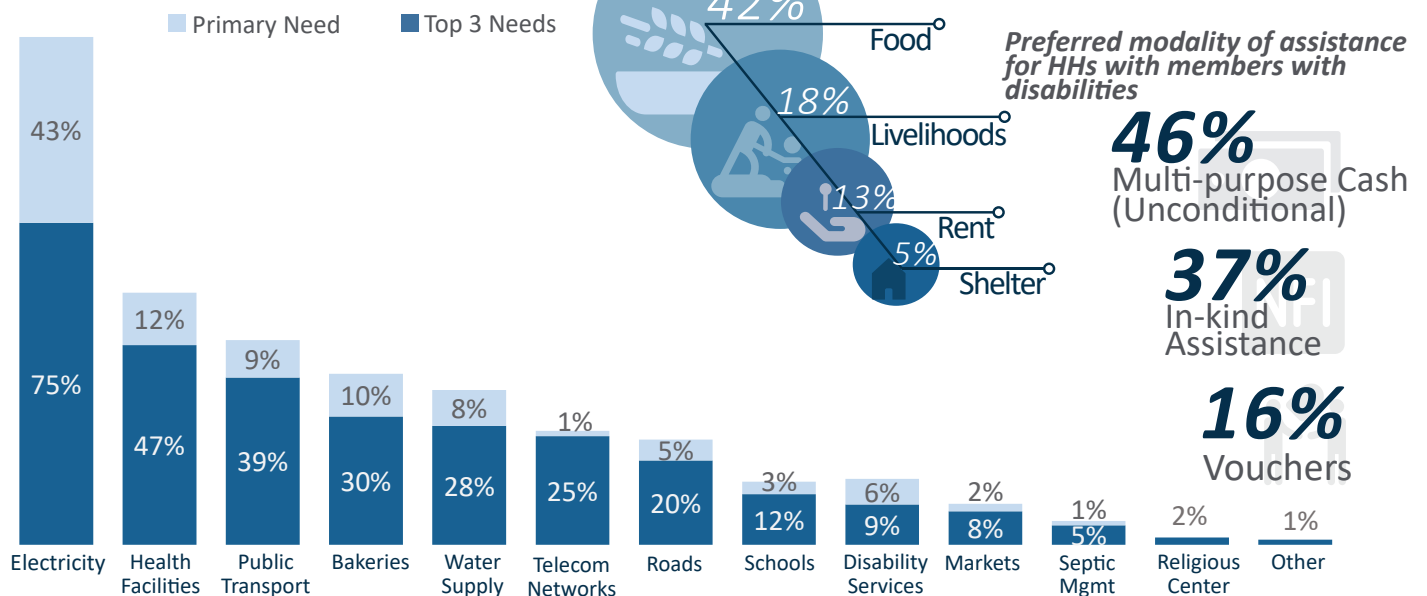


IDP HHs with members with disabilities report improved access to safe water, as well as financial and legal services as compared to IDP HHs without members with disabilities. Of IDP HHs with members with disabilities 65 percent have access to legal services (compared to 54 percent of their counterparts), 79 percent have access to financial services (compared to 69 percent) and 88 percent can access safe

water (compared to 82 percent). Although access may appear moderately higher than HHs without members with disabilities, chronic income insufficiency of IDP HHs with members with disabilities necessitates such access. 53 percent of IDP HHs with >1 members with disabilities depend on remittances, compared to 43 percent of those without a member with disabilities to meet basic needs.

Priority Needs

Priority infrastructure needs for HHs with members with disabilities



Future Intentions

Future intentions of IDP HHs with 1 or more members with disabilities (% of IDP HHs)

